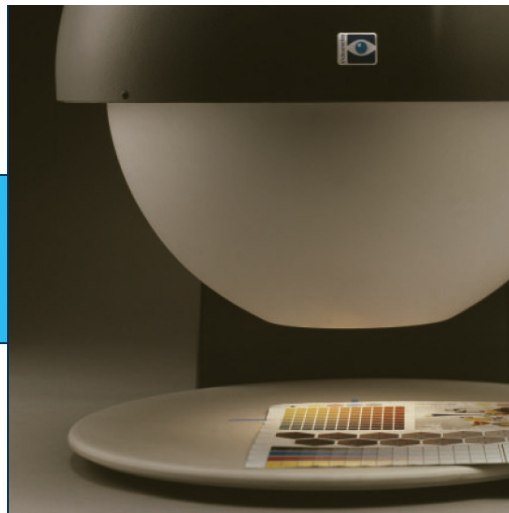
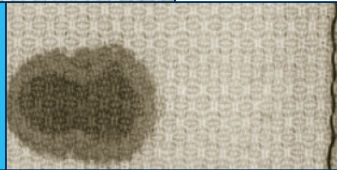
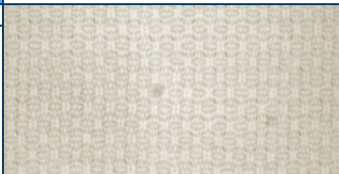


Mahalanobis distances provide a powerful method of measuring how similar some set of conditions is to an ideal set of conditions.



Multispectral Imaging Toolbox

- A toolbox for VideometerLab

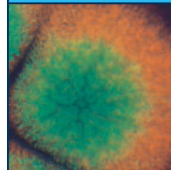
The Multispectral Imaging Toolbox (MSI) provides you with a comprehensive set of tools to assess and understand your data. It includes functions and interactive tools for analyzing historical data, modeling data, simulating systems and developing statistical algorithms.

MSI is a collection of tools used for multispectral image processing on the data from Videometer instruments. Unlike the IPT Toolbox for you may work on several bands using this toolbox.

MSI Functions Available

- Intensity Normalization across selected bands
- Orthogonal transformations
 - Principal Component Analysis (PCA)
 - Maximum Autocorrelation Factor (MAF)
- Quadratic transformations
 - Mahalanobis distance

Calculated transformations may be saved and saved transformations may be loaded and applied to other images.



The **MAF transformation** is especially developed for extraction of information from spectral data taking noise into consideration.

